

Vana stavilar montata pe perete DN200-DN2500
CANALIZARE
APA

Descrierea produsului (executie standard):

- Etansare bidirectionala clasa C conform PN-EN 12266-1
- Corp si sertar din otel inoxidabil 1.4301
- Design si constructie durabila, care confera siguranta in operare
- Pasaj integral
- Etansarea de pe sertar din elastomer siliconic LAR
- Etansarea sertarului are posibilitatea de a fi inlocuita fara scoatere din instalatie
- Piulita tije din alama forjata
- Tija din otel inoxidabil cu filet roluit
- Suruburi, saibe si piulite din otel inoxidabil
- Diametru nominal conform PN-EN ISO 6708
- Dimensiuni constructive conform fisa tehnica
- Marcare produs conform PN-EN 19

Domenii de utilizare:

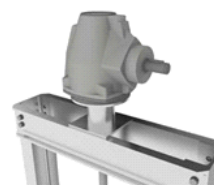
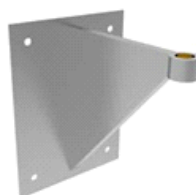
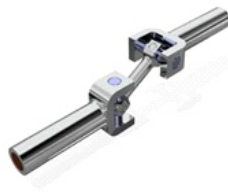
In retele de canalizare si de transport a apei uzate, statii de tratare si pompare ape uzate, bazine decantoare, bazine de drenaj hidrotehnic sau rutier, sisteme de protectie impotriva inundatiilor, etc.
 Presiune de lucru maxim 0.6 [bar]
 Temperatura de lucru intre -50°C si +80°C.

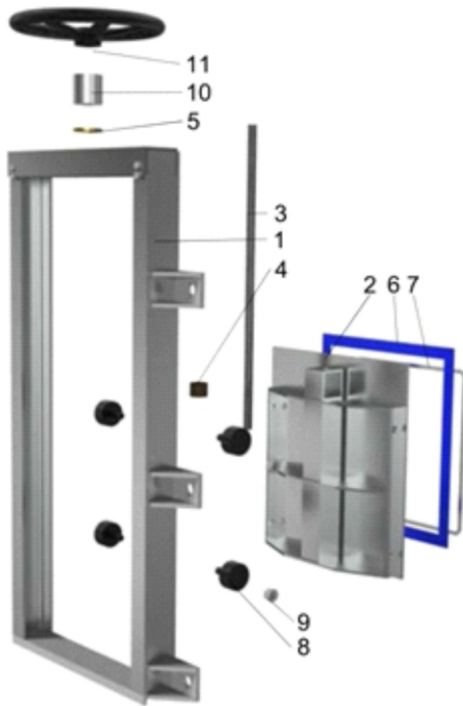
Variante de executie:

Pregatita pentru actiune electrica
 Actionata manual cu reductor
 Actionata electric
 Vana tip perete - deschidere inversa (in jos)

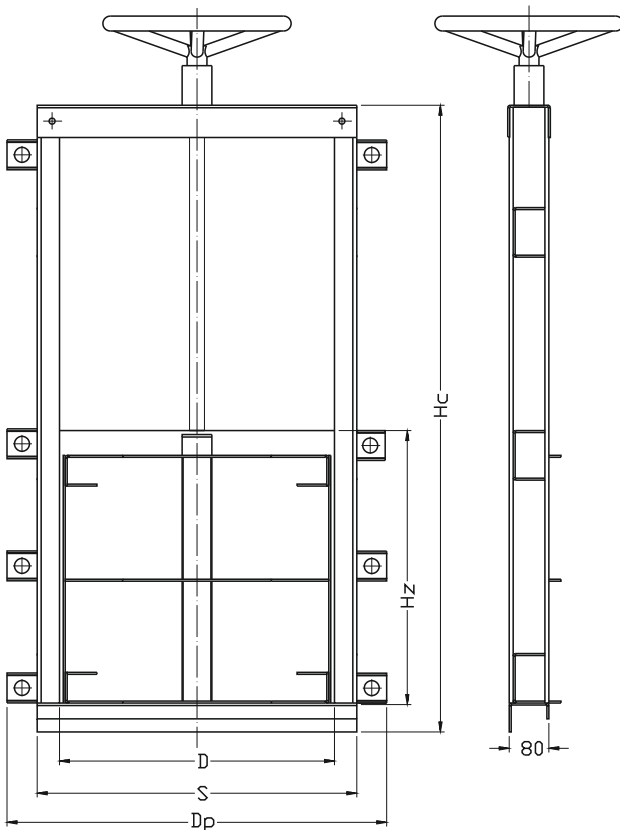
Accesorii:

Stalp de manevra pentru mecanism de actiune
 Tija cu articulatie cardanica
 Colier de sustinere montat pe perete
 Placa de sustinere montata pe perete





| No. | Reper | Material | |
|-----|-----------------------|--------------------------------------|--|
| | | Standard | Optional |
| 1 | Corp | Otel inoxidabil 1.4301 EN 10027-2 | Otel inoxidabil 1.4401, 1.4404, 1.4571 EN 10027-2 |
| 2 | Sertar | Otel inoxidabil 1.4301 EN 10027-2 | Otel inoxidabil 1.4401, 1.4404, 1.4571 EN 10027-2 |
| 3 | Tija | Otel inoxidabil 1.4301 EN 10027-2 | Otel inoxidabil 1.4401, 1.4404, 1.4571 EN 10027-2 |
| 4 | Piulita tije | Bronz CW306G EN 1412 | - |
| 5 | Rulment | Bronz CW306G EN 1412 | - |
| 6 | Garnitura | Elastomer LAR | Cauciuc EPDM, NBR EN-ISO 1629 |
| 7 | Inel montaj | Otel inoxidabil 1.4301 EN 10027-2 | Otel inoxidabil 1.4401, 1.4404, 1.4571 EN 10027-2 |
| 8 | Role | POM | Alama CW617N, Bronz CW306G EN 1412 |
| 9 | Elemente fixe role | Otel inoxidabil 1.4301 EN 10027-2 | Otel inoxidabil 1.4401 / 1.4404 / 1.4571 EN 10027-2 |
| 10 | Suport | Otel inoxidabil 1.4301 EN 10027-2 | Otel inoxidabil 1.4401, 1.4404, 1.4571 EN 10027-2 |
| 11 | Roata manevra | Otel inoxidabil 1.4301 EN 10027-2 | - |



| DN | D | S | Dp | Hz | Hc |
|------|------|------|------|------|------|
| [mm] | | | | | |
| 200 | 200 | 300 | 400 | 250 | 700 |
| 250 | 250 | 350 | 450 | 300 | 800 |
| 300 | 300 | 400 | 500 | 350 | 900 |
| 400 | 400 | 500 | 600 | 450 | 1100 |
| 500 | 500 | 600 | 700 | 550 | 1300 |
| 600 | 600 | 700 | 800 | 650 | 1500 |
| 700 | 700 | 800 | 900 | 750 | 1700 |
| 800 | 800 | 900 | 1000 | 850 | 1900 |
| 900 | 900 | 1000 | 1100 | 950 | 2100 |
| 1000 | 1000 | 1100 | 1200 | 1050 | 2300 |
| 1100 | 1100 | 1200 | 1300 | 1150 | 2500 |
| 1200 | 1200 | 1300 | 1400 | 1250 | 2700 |
| 1300 | 1300 | 1400 | 1500 | 1350 | 2900 |
| 1400 | 1400 | 1500 | 1600 | 1450 | 3100 |
| 1500 | 1500 | 1600 | 1700 | 1550 | 3300 |
| 1600 | 1600 | 1700 | 1800 | 1650 | 3500 |
| 2000 | 2000 | 2100 | 2200 | 2050 | 4300 |
| 2500 | 2500 | 2600 | 2700 | 2550 | 5300 |

* - Posibilitate de proiectare si executie conform solicitarilor clientilor (presiune, dimensiuni, materiale, tip de actionare, modalitate de montaj).
Ne rezervam dreptul de a modifica caracteristicile produselor in functie de evolutia tehnica.